

 4 Bed
  2.5 Bath
  3 Car Garage
 4,267 SQ/FT

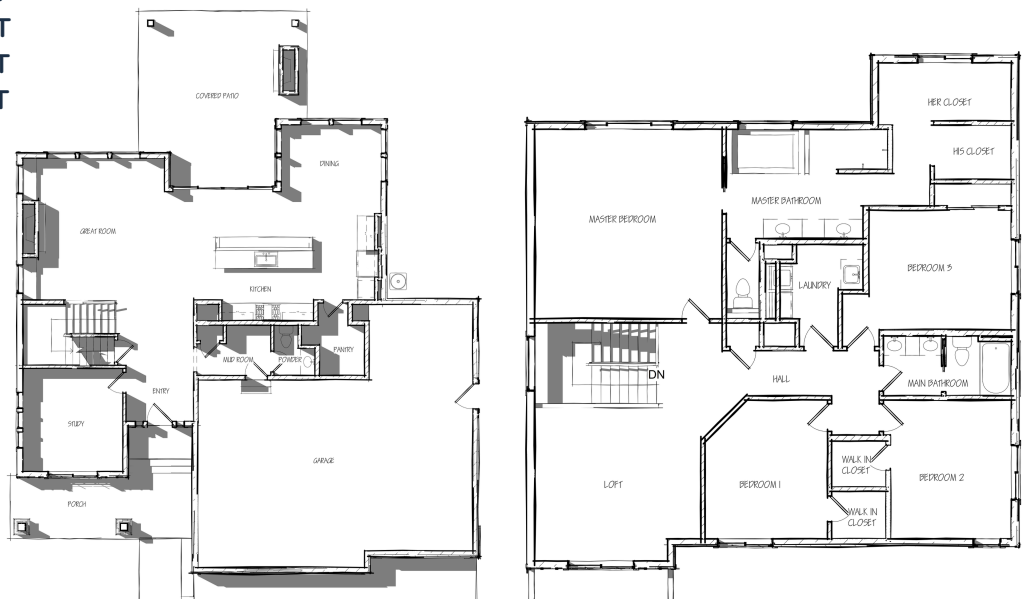


ABOUT THE MILLCREEK FLOOR PLAN:

An Entertainers Delight! The Millcreek is one of our most recent two-story creations and it will capture your heart at first entry. The main floor features a generous open layout where the great-room, kitchen and dining nook effortlessly transition into one another. In addition, the double slider doors off the island lead to the covered back patio/deck – amazing! There’s a huge walk-in pantry, drop zone off garage entry and office/den perfect for those needing to get work done from home. The upper level has four bedrooms, including the luxurious primary suite, loft and laundry. Some versions of this home have a lower level for more space – You can’t go wrong!

MAIN FLOOR: 1,366 SQ/FT
UPPER LEVEL: 1,673 SQ/FT
OPTIONAL BSMT: 1,366 SQ/FT
TOTAL: 4,267 SQ/FT

WIDTH: 55'
DEPTH: 66'



Actual floor plan may vary from pictured plan. Areas and dimensions are approximate. Contact us for list of included features.